

ProLine

TOOL & SUPPLY, LLC

LK4037

SEMI HOOD ATTACHMENT

Assembly Guide



www.prolinetoolsupply.com

(989) 315-8946

Table of Contents

SEMI HOOD ATTACHMENT	3
SPECIFICATIONS	3
PARTS & HARDWARE	4
ASSEMBLY GUIDE	5
OPERATION	14

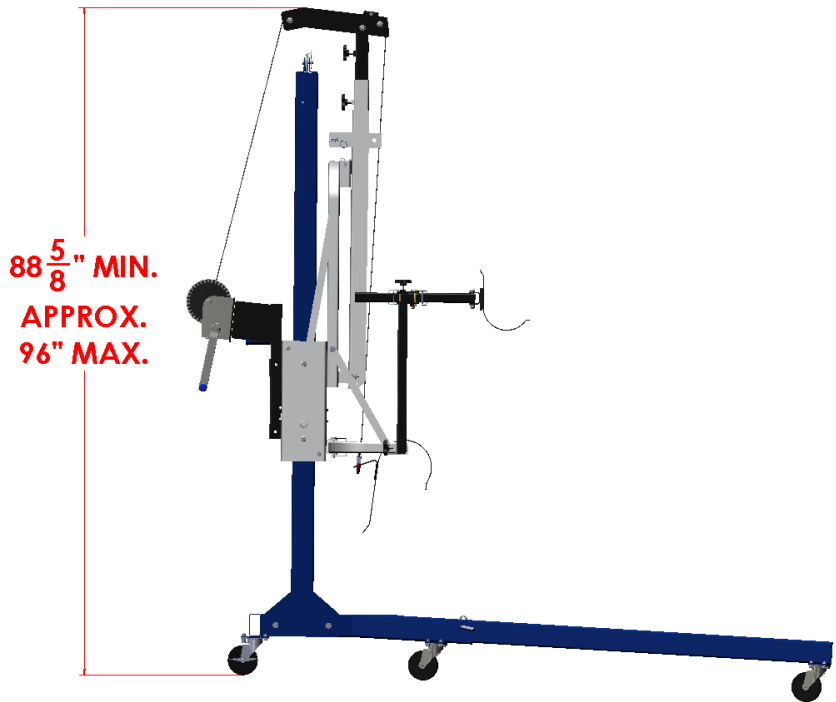
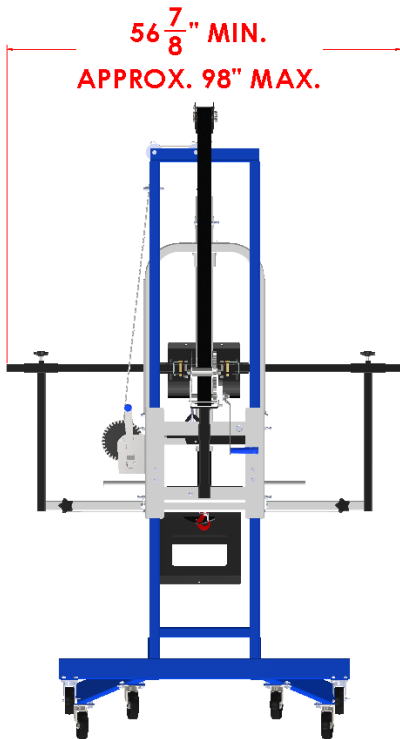
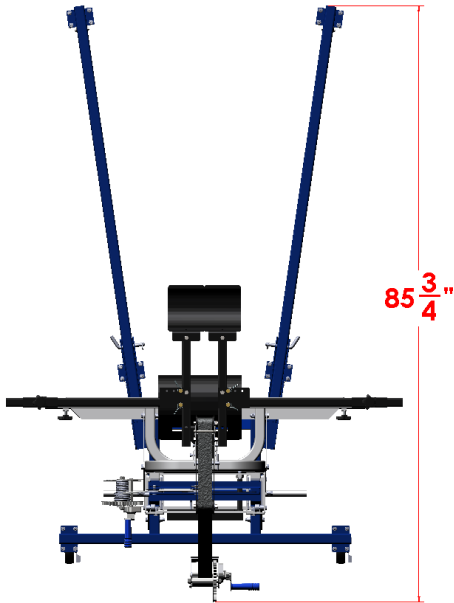
If you have any questions or comments, please call 1 (989) 315-8946.

Proline Tool & Supply, LLC
210 Pigeon Rd Bad Axe MI 48413 US
(989) 315-8946

Semi Hood Attachment

The LK4037 Semi Hood Attachment quickly installs on the LK4000 Motor City Lift King (Main Component), and is a fast, easy and safe way for one person to remove or install a semi hood. When using the LK4037 Semi Hood Attachment the semi hood can be stored on the Main Component, allowing the hood to be moved as needed. With the LK4037 Semi Hood Attachment and the Main Component, the hood can also be raised, lowered or tilted in an upward position.

Specifications



Parts

PartNo	Description	QTY.
*	END CAP, PLASTIC, 1 1/2 x 1 1/2	1
*	3/8 FLAT WASHER	2
*	3/8-16 THIN NYLON INSERT HEX NUT	8
*	3/8-16 X 1 HEX BOLT	2
*	3/8-16 x 2 HEX BOLT	2
*	3/8-16 X 2 1/4 HEX BOLT	2
*	3/8-16 X 2 1/2 HEX BOLT	1
*	3/8-16 x 3 1/4 HEX BOLT	3
*	DELFIN ROLLER & BEARING ASSEMBLY	2
*	CLEVIS PIN, 3/8 x 3 1/2 USABLE LENGTH, WITH CLIP	1
*	5/16 X 3 SQ. BAIL LOCKING PIN	4
*	3/8- X 2 1/2 SQ. BAIL LOCKING PIN	1
*	FELT PAD FOR LK4043	2
*	FELT PAD FOR LK4045	1
*	FELT PAD FOR LK4050	2
LK-H006	3/8-16 STAR KNOB	2
LK-H019	WINCH	1
LK-H021	WINCH STRAP & HOOK	1
LK4038	WELDMENT 1	1
LK4039	WELDMENT 2	1
LK4040	WELDMENT 8-LH	1
LK4041	WELDMENT 8-RH	1
LK4042	ADJUSTMENT TUBE	2
LK4043	WELDMENT 9	2
LK4044	WELDMENT 10	2
LK4045	WELDMENT 11	1
LK4046	WELDMENT 12	1
LK4047	WELDMENT 14	1
LK4048	WELDMENT 14A	1
LK4049	WELDMENT 15	2
LK4050	WELDMENT 17	2



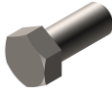
1 1/2 x 1 1/2
plastic end cap



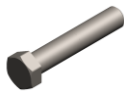
3/8
flat washer



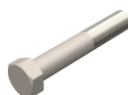
3/8-16 Thin
Nylon Insert
Hex Nut



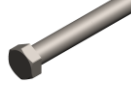
3/8-16 x 1
Hex Bolt



3/8-16 x 2
Hex Bolt



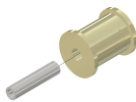
3/8-16 x 2 1/4
Hex Bolt



3/8-16 x 2 1/2
Hex Bolt



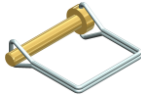
3/8-16 x 3 1/4
Hex Bolt



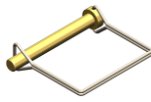
Delrin Roller &
Bearing Assembly



Clevis Pin,
3/8 x 3 1/2
Usable Length
with Clip



5/16 x 3
Sq. Bail
Locking Pin



3/8 x 2 1/2
Sq. Bail
Locking Pin



Felt Pads
for LK4043,
LK4045 & LK4050

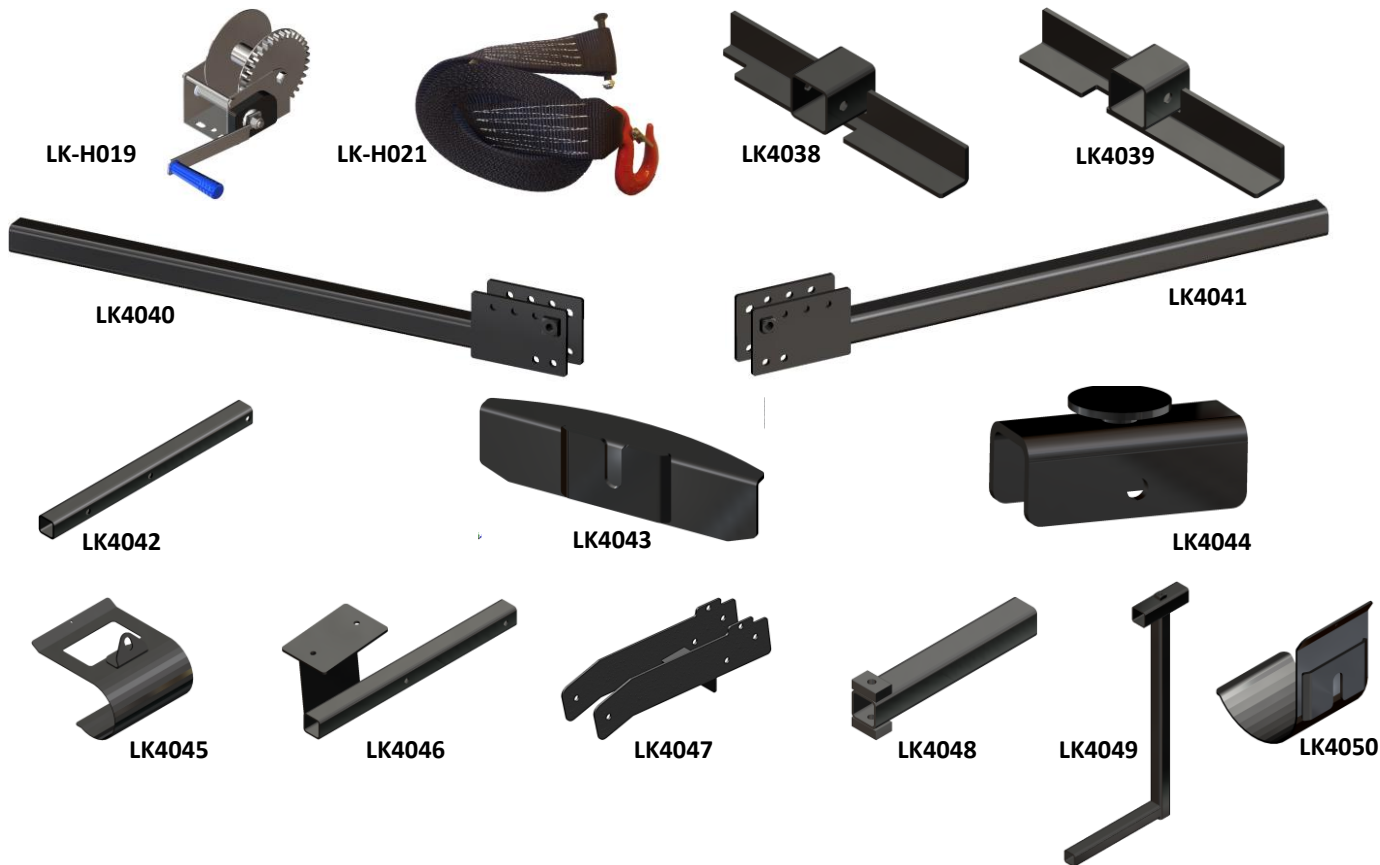
LIFT KING

Lift King
Label



LK-H006

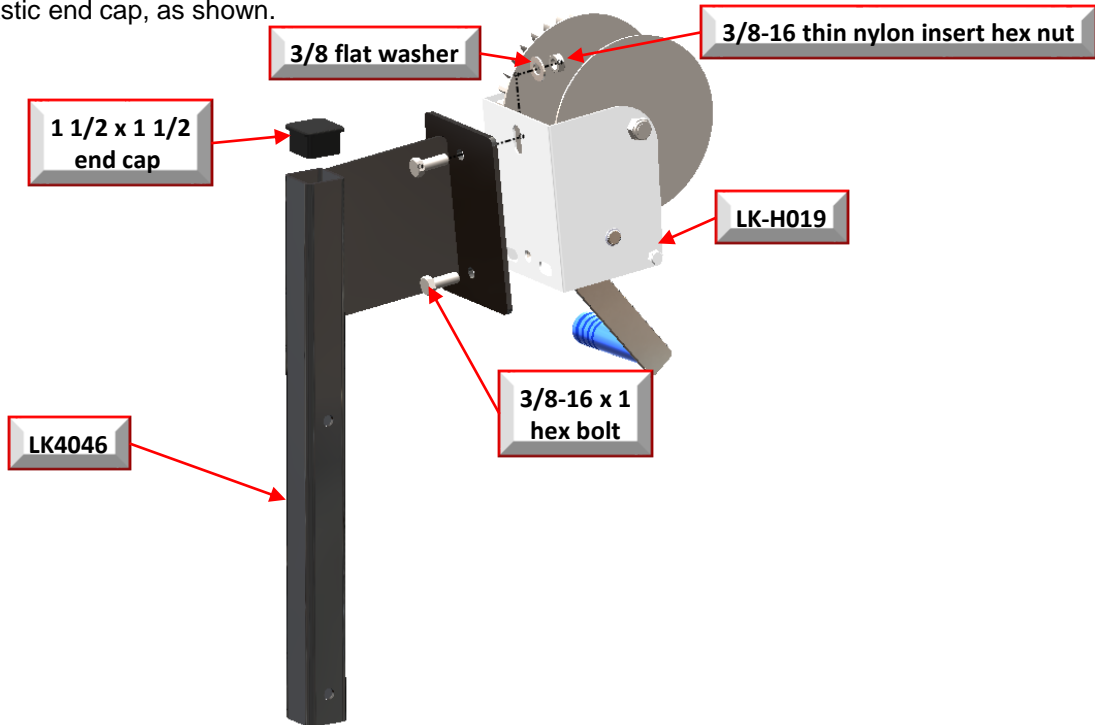
Parts cont.



Assembly

STEP 1

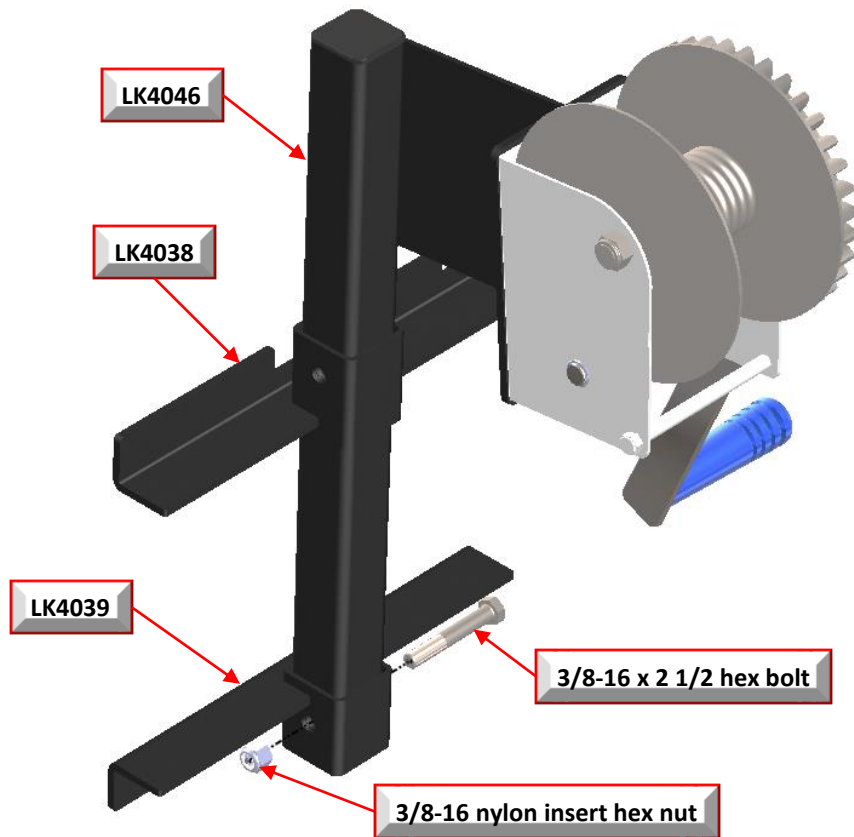
Attach the LK-H019 winch to LK4046 using (2) 3/8 x 1 hex bolts, (2) 3/8 thin nylon insert nuts and (2) 3/8 washers. Insert 1 1/2 x 1 1/2 plastic end cap, as shown.



Assembly

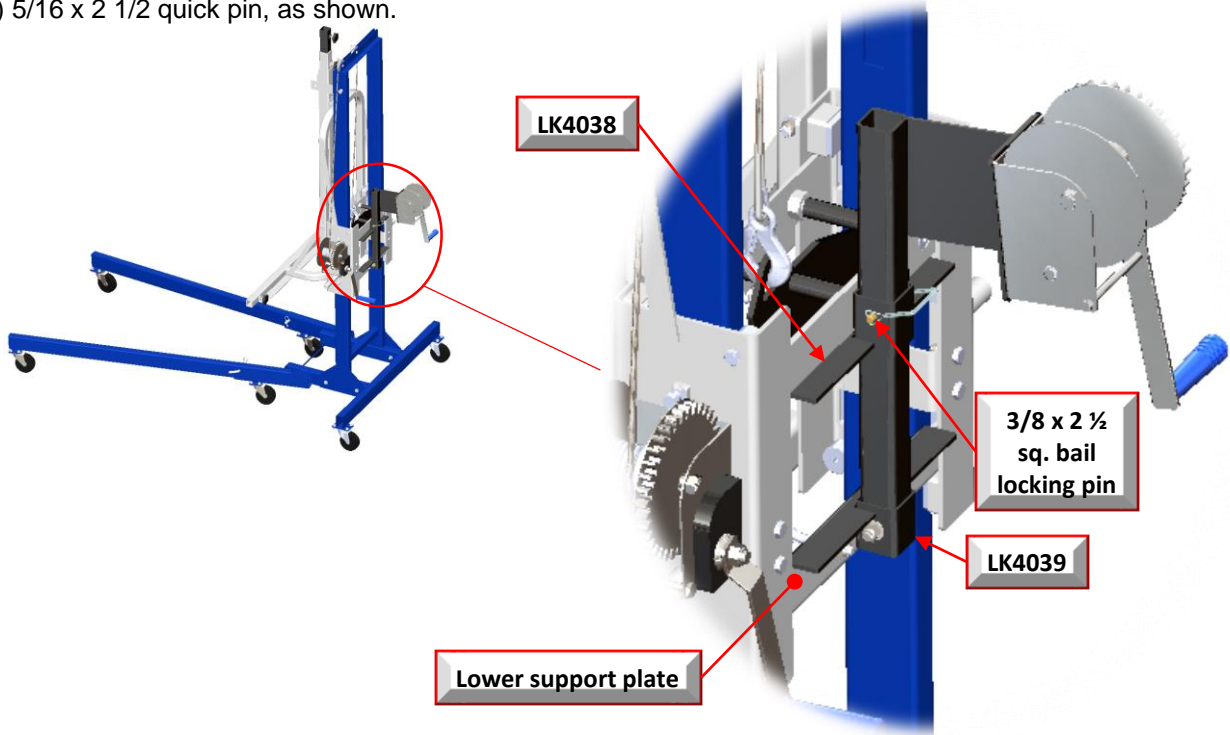
STEP 2

Slide LK4038 and LK4039 over the tube of LK4046, as shown (note orientation of bent plates). Fasten LK4039 using (1) 3/8-16 x 2 3/8 hex bolt and (1) 3/8-16 nylon insert hex nut.



STEP 3

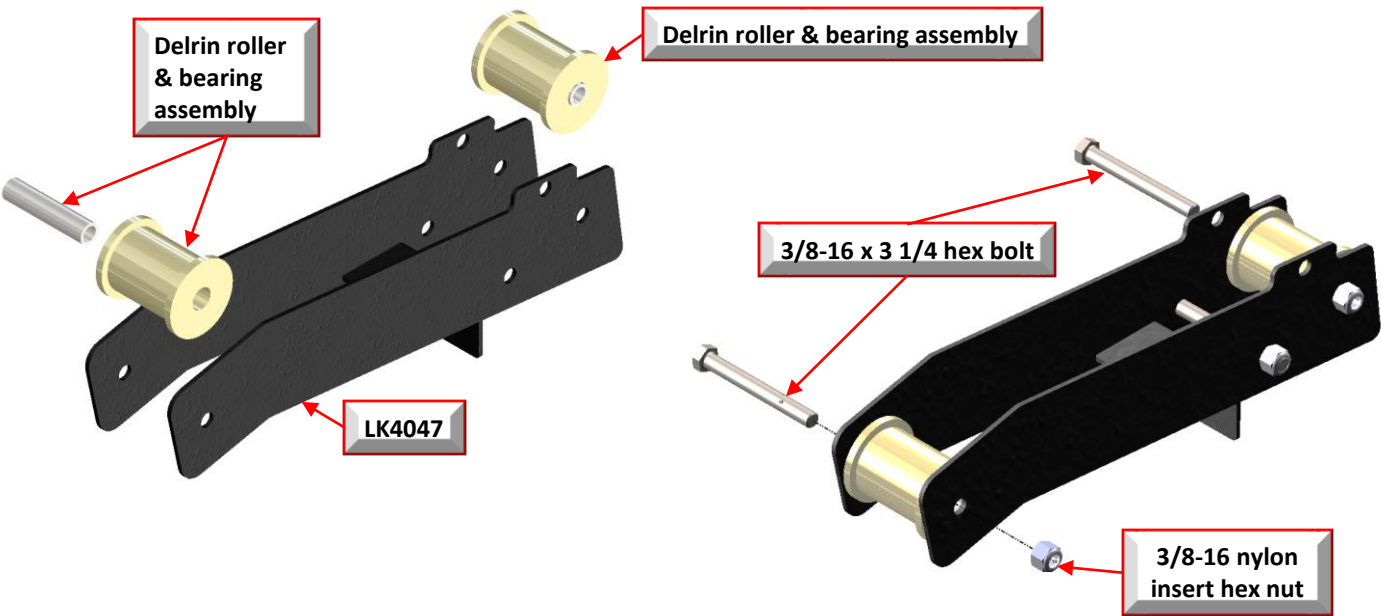
Rest LK4039 on the lower support plate of the roller box, as shown. Slide LK4038 upward and secure with (1) 5/16 x 2 1/2 quick pin, as shown.



Assembly

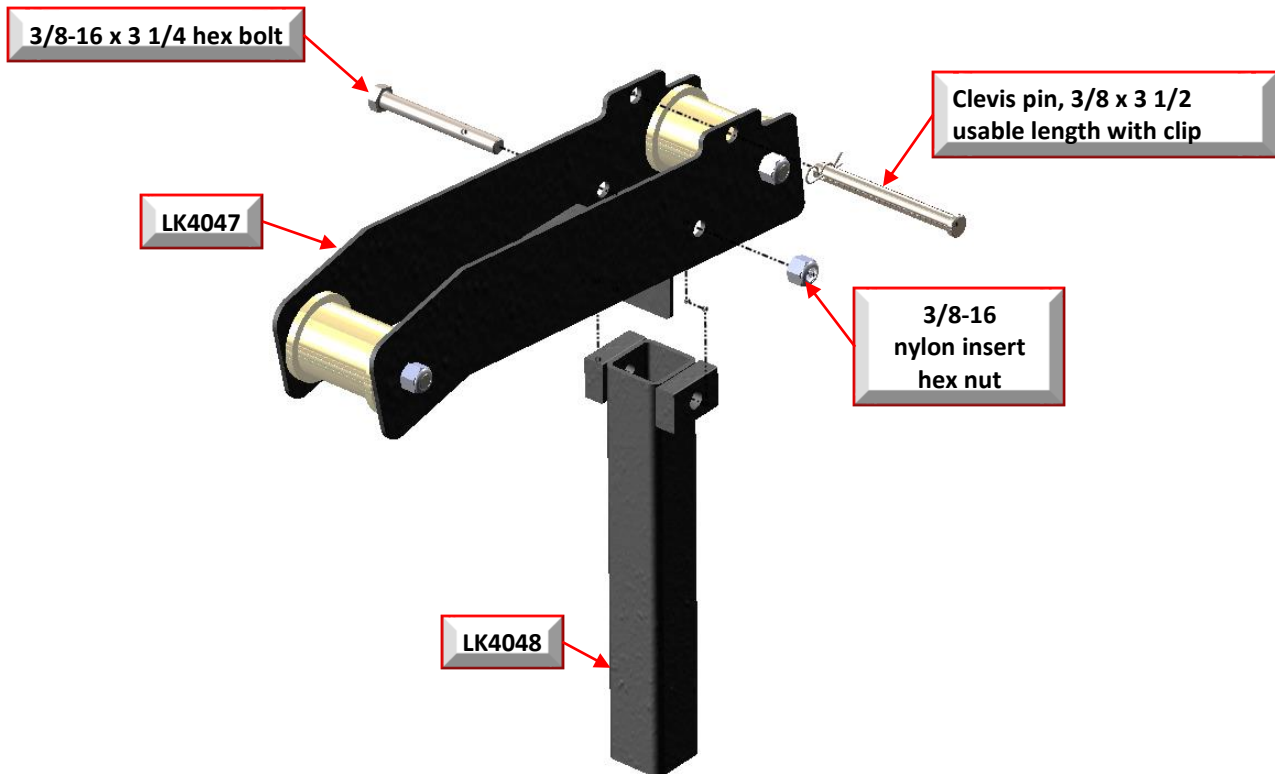
STEP 4

Insert the (2) Delrin Roller & Bearing Assemblies into LK4047, as shown. Fasten the roller bearing assemblies to LK4047 using a 3/8-16 x 3 1/4 hex bolt and 3/8-16 nylon insert hex nut for each bearing assembly.



STEP 5

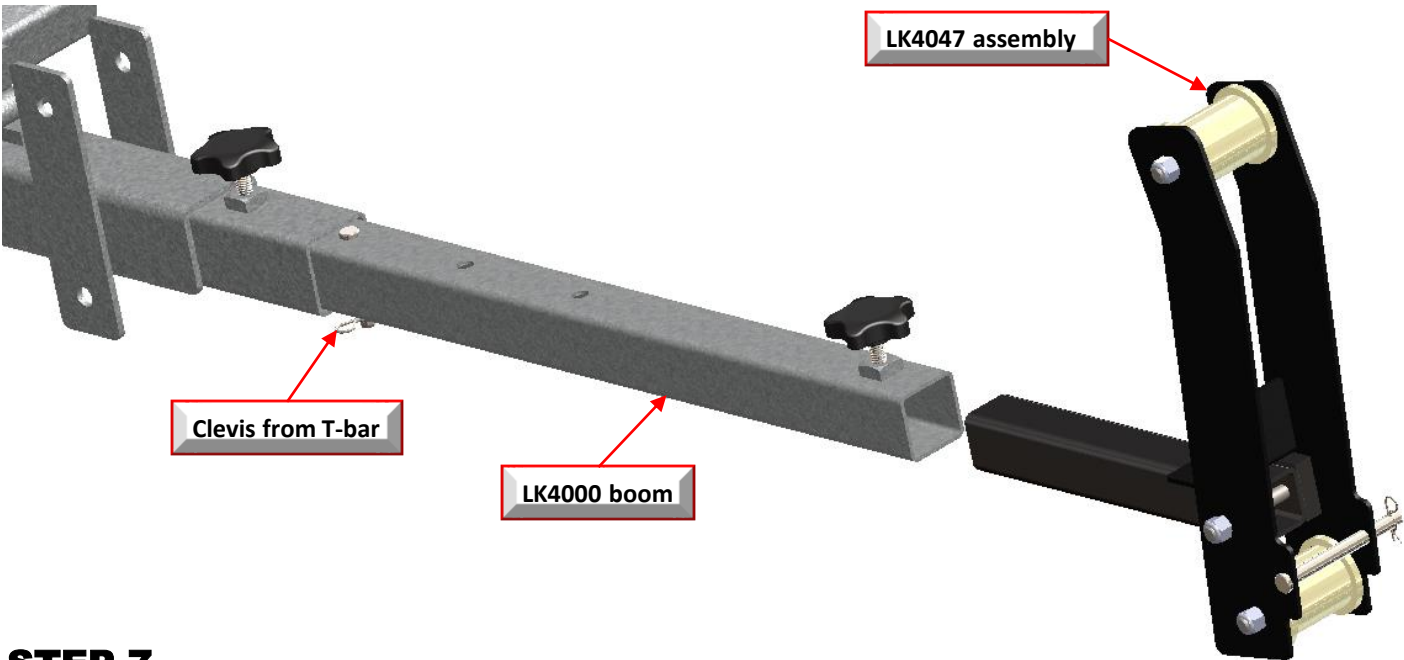
Secure LK4038 to LK4047 using (1) 3/8-16 x 3 1/4 hex bolt and (1) 3/8-16 nylon insert hex nut. Insert 3/8 x 2 3/4 usable length clevis pin, as shown.



Assembly

STEP 6

Slide the LK4047 assembly into the boom of the LK4000 (Main Component). The LK4047 assembly must be inserted into the boom in the orientation shown below. Remove clevis pin from T-bar and insert it into the boom for height adjustment.



STEP 7

Thread the LK-H020 winch strap through the LK4047 assembly as shown. Make sure the hook end of the strap is on the side of the LK4047 assembly shown below.



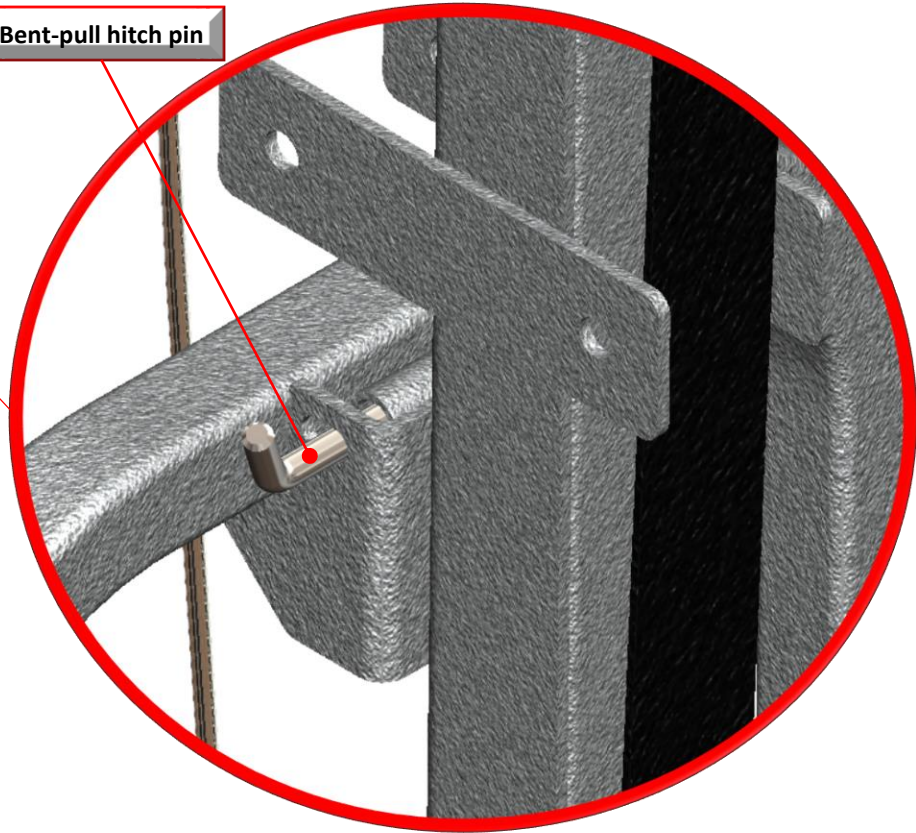
Assembly

STEP 8

Raise the boom on the LK4000 (Main Component) and secure with the bent-pull hitch pin.

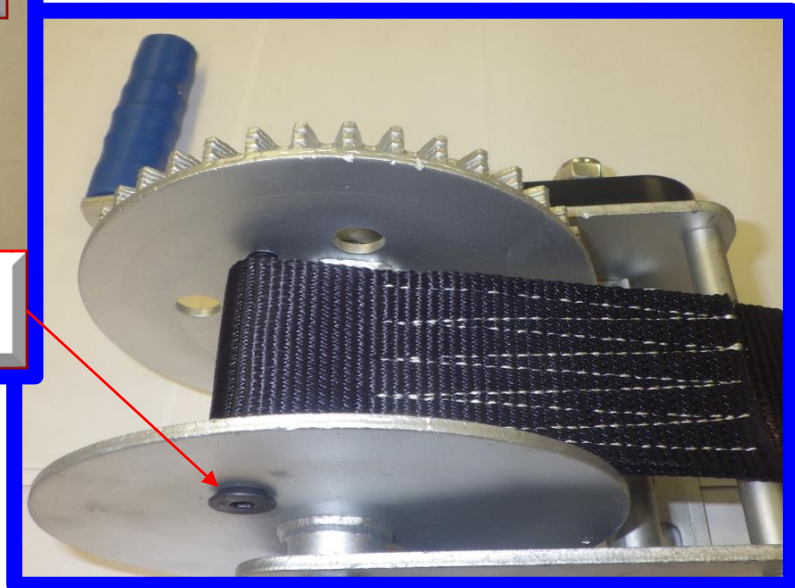
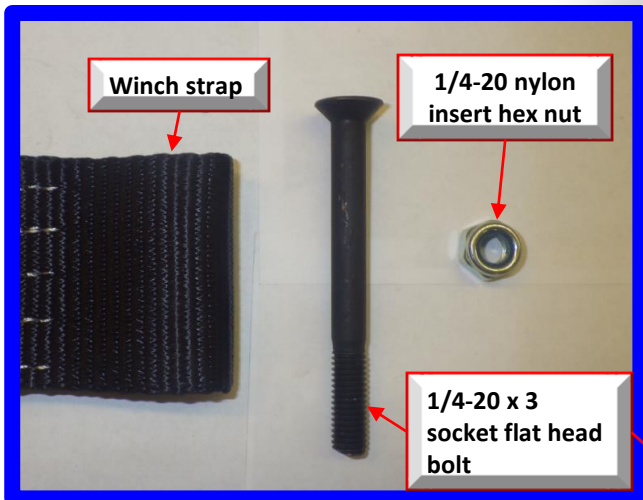


Bent-pull hitch pin



STEP 9

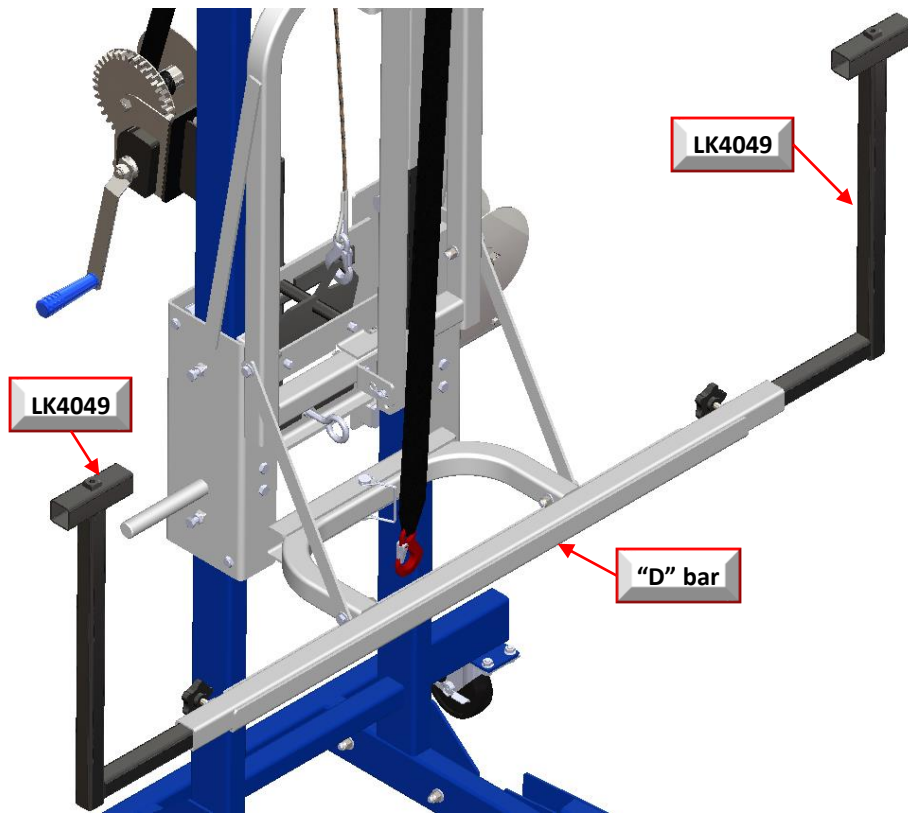
Using the hardware included with the winch strap, attach the strap to the LK-H019 winch as shown.



Assembly

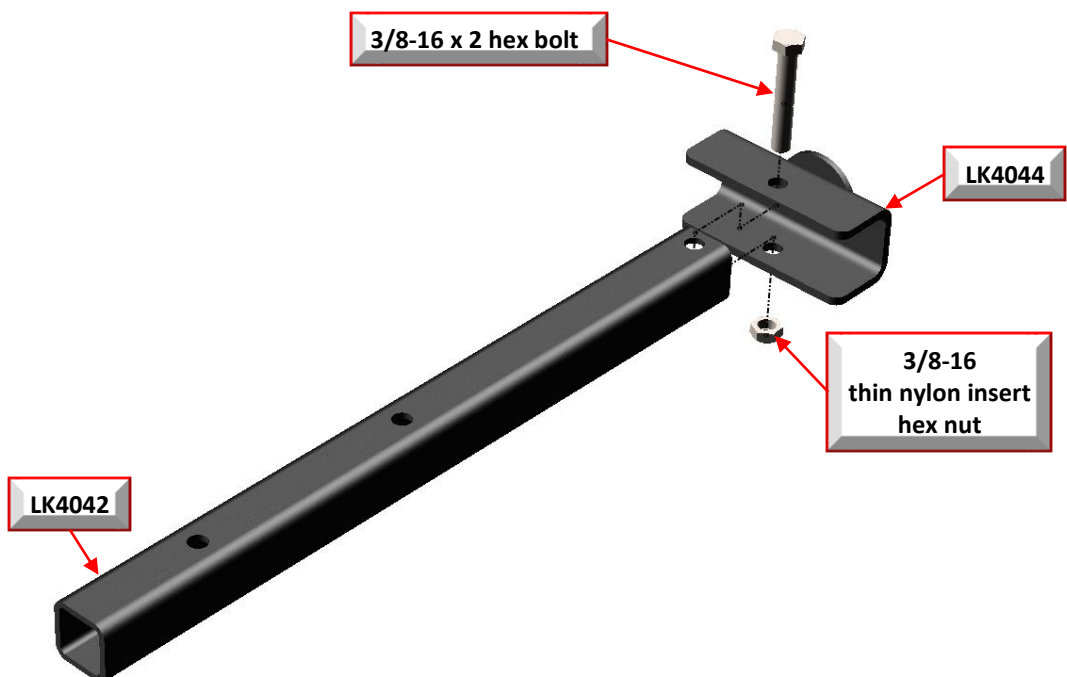
STEP 10

Insert both LK4049's into the "D" bar on the LK4000 (Main Component).



STEP 11

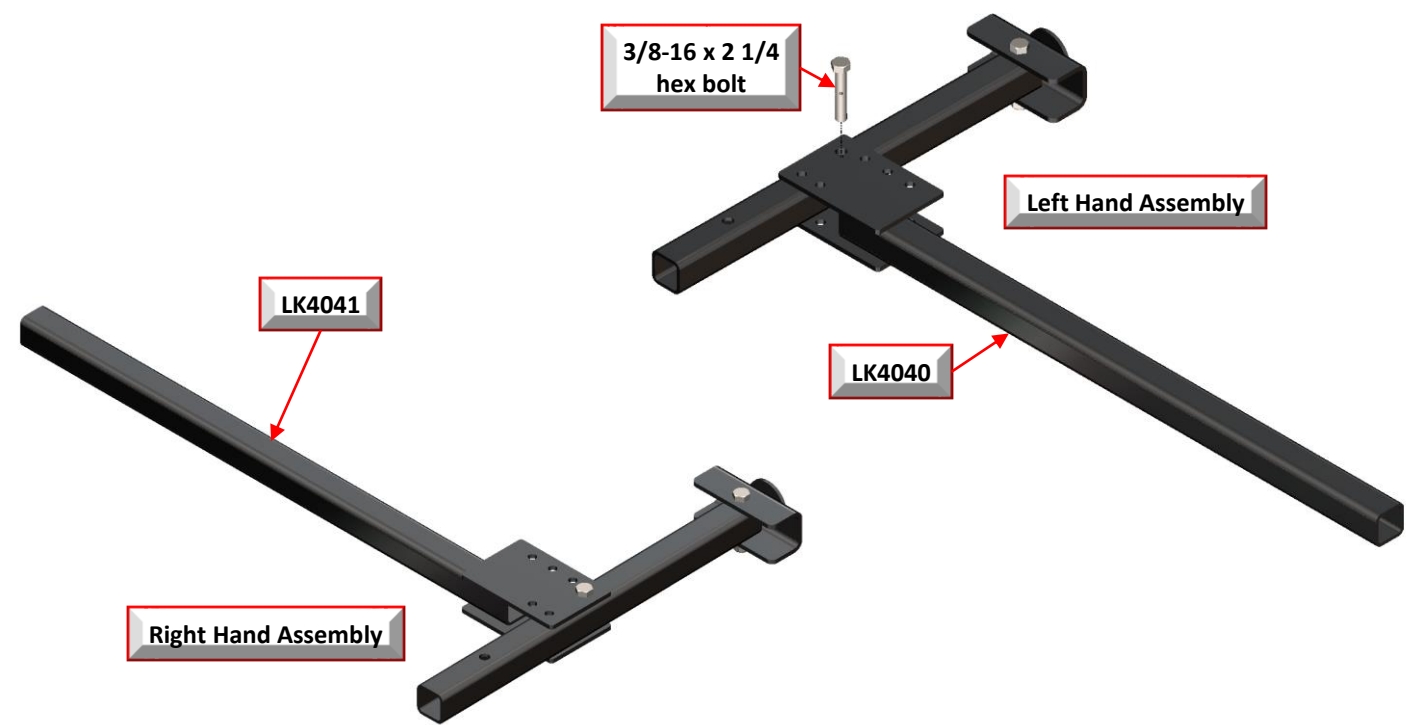
Attach LK4042 to LK4044 using (1) 3/8-16 x 2 hex bolt and (1) 3/8-16 thin nylon insert hex nut. Do this for both the left hand (LH) and right hand (RH) assemblies.



Assembly

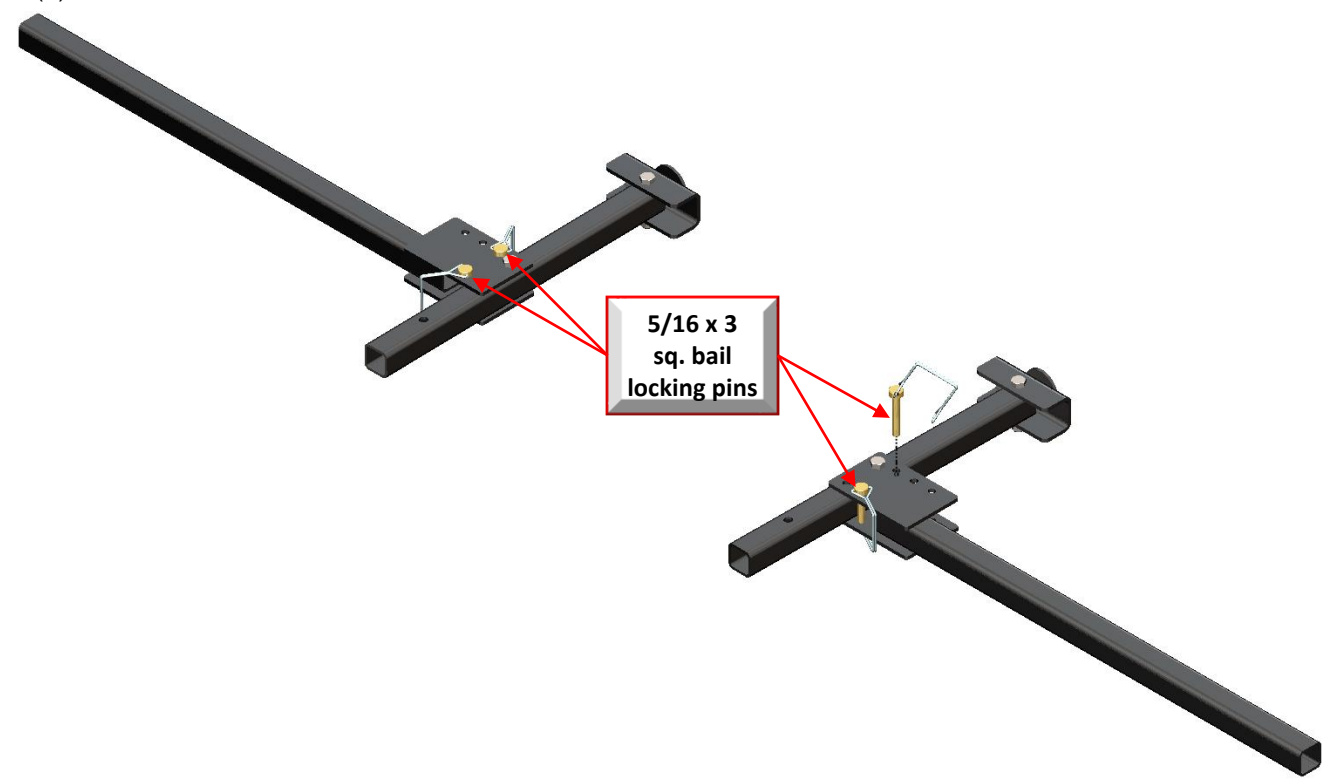
STEP 12

Attach LK4040 to LK4042 using (1) 3/8-16 x 2 1/4 hex bolt. Also do this for right hand (RH) assembly using LK4041 instead of LK4040.



STEP 13

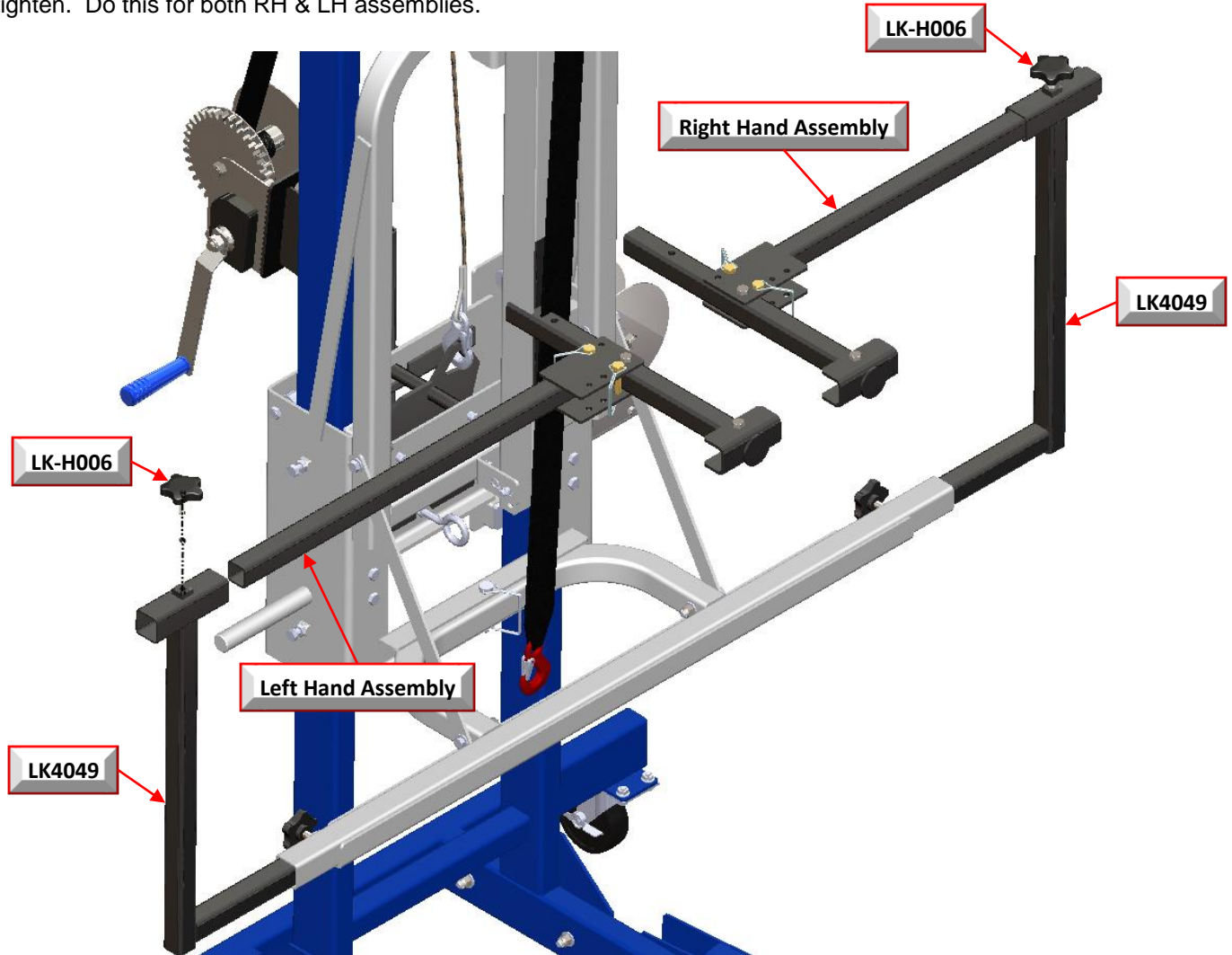
Insert (4) 5/16 x 2 Quick Pins into assemblies, as shown.



Assembly

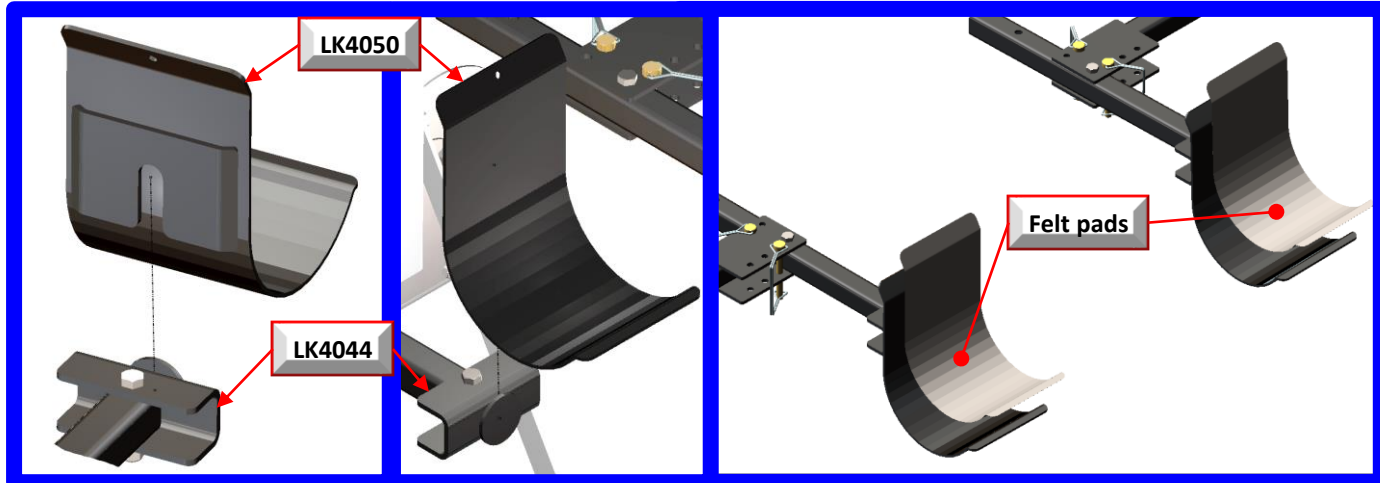
STEP 14

Slide the Left Hand & Right Hand Assemblies into LK4049 as shown. Thread the LK-H006 Star Knob into LK4049 and tighten. Do this for both RH & LH assemblies.



STEP 15

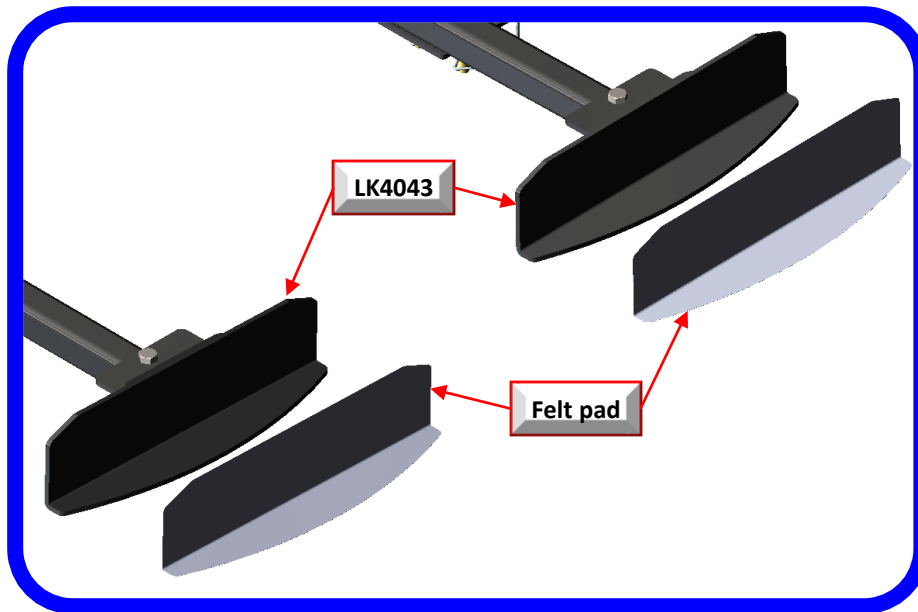
Slide LK4050 onto LK4044. Do this on both the Right Hand and the Left Hand Assemblies. Apply felt, as shown below.



Assembly

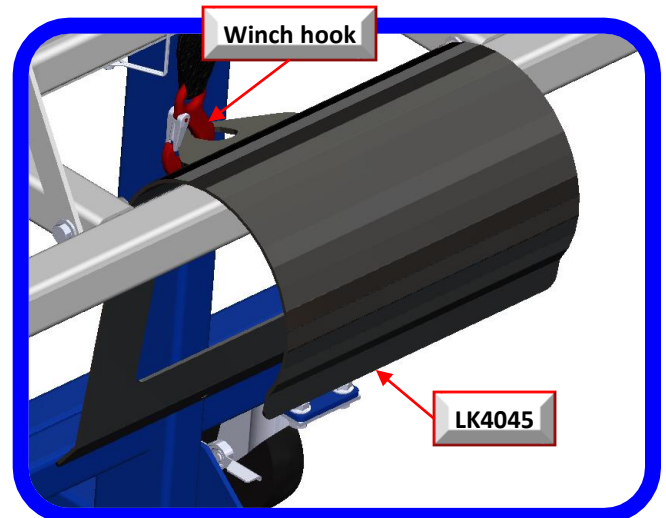
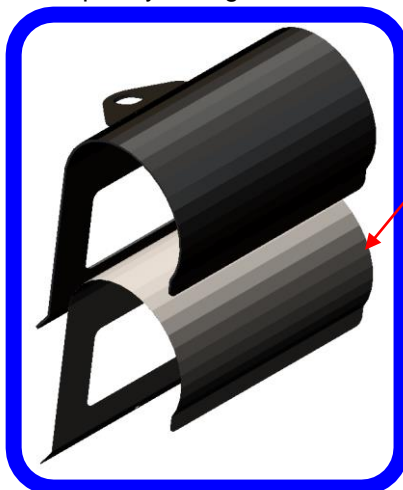
STEP 16

Apply felt to LK4043, as shown below.



STEP 17

Apply felt pad to LK4045, as shown below. Attach LK4045 to the winch hook. The LK4045 can be hung over the “D” bar for temporary storage.



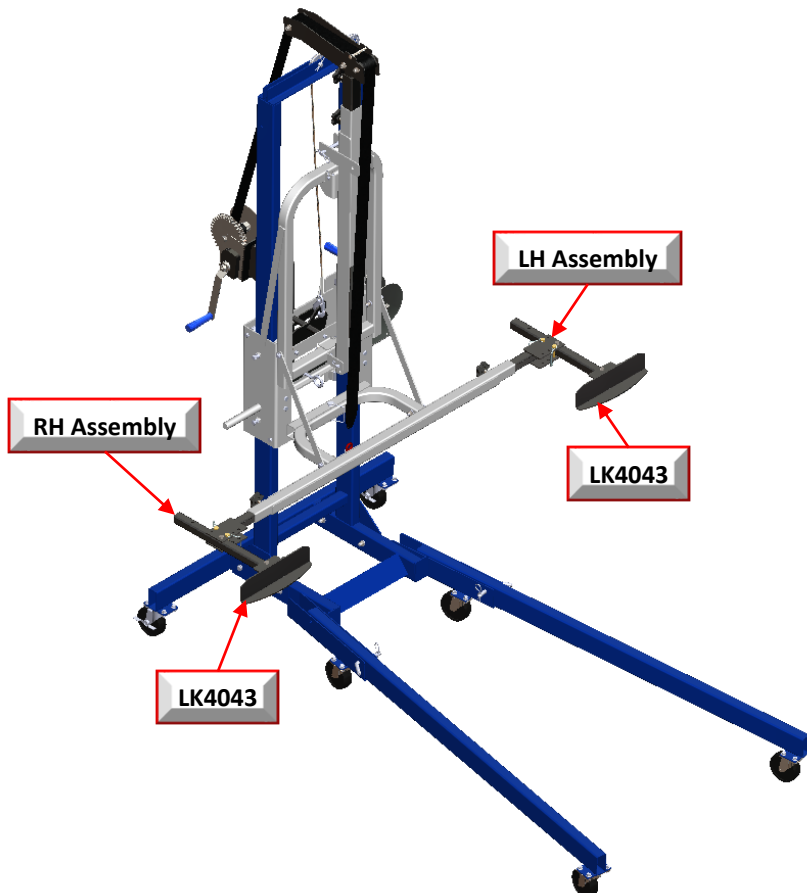
SEMI HOOD ATTACHMENT CONFIGURATION 1

This configuration can be used when lifting a semi hood that has the grill removed.



SEMI HOOD ATTACHMENT CONFIGURATION 2

This configuration can be used when lifting a semi hood with the grill attached.



Operation

Configuration 1

This configuration can be used when the truck grill is removed.



Configuration 2

This configuration can be used when the truck grill is attached.

